

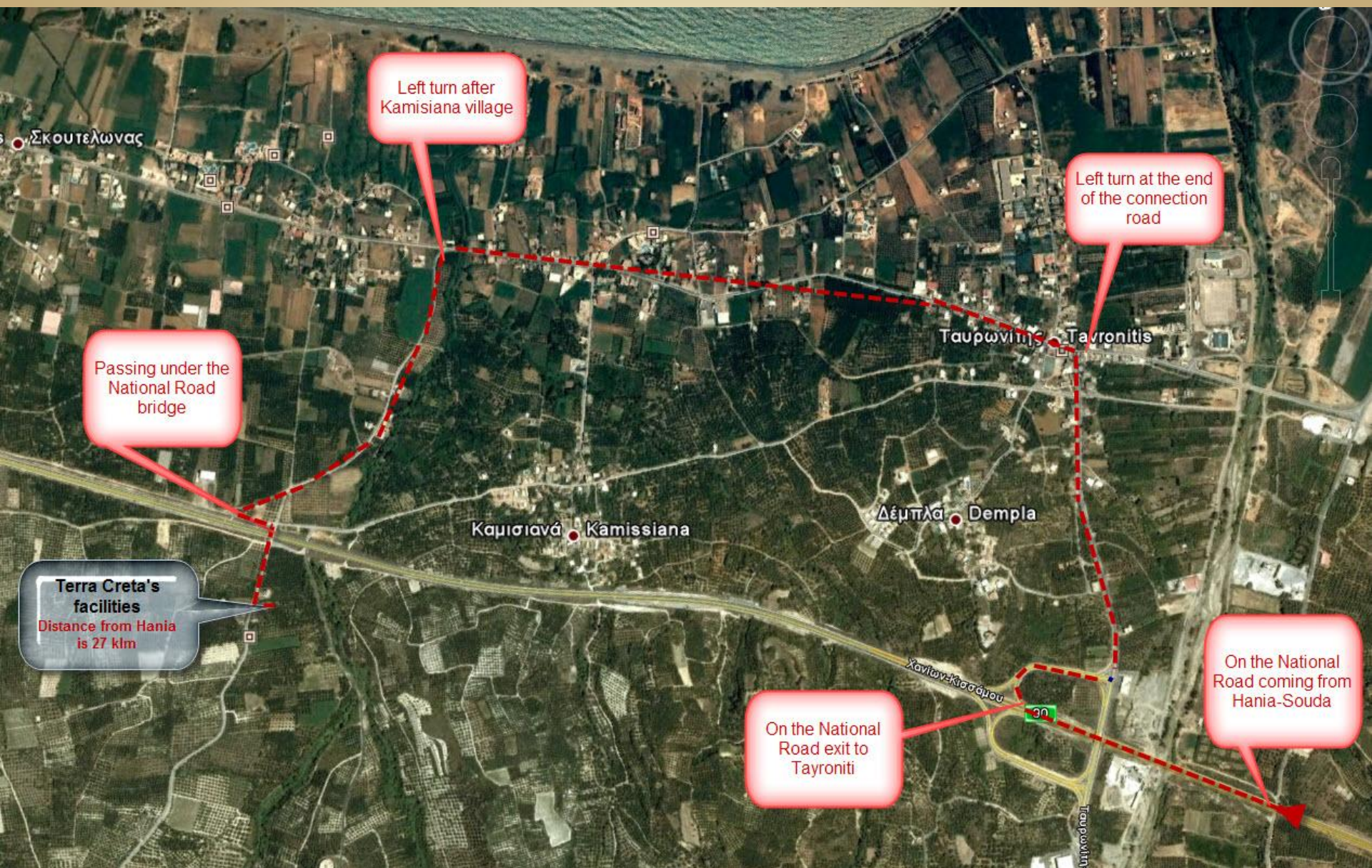


# Driving Directions from the Chania National Road to Terra Creta SA



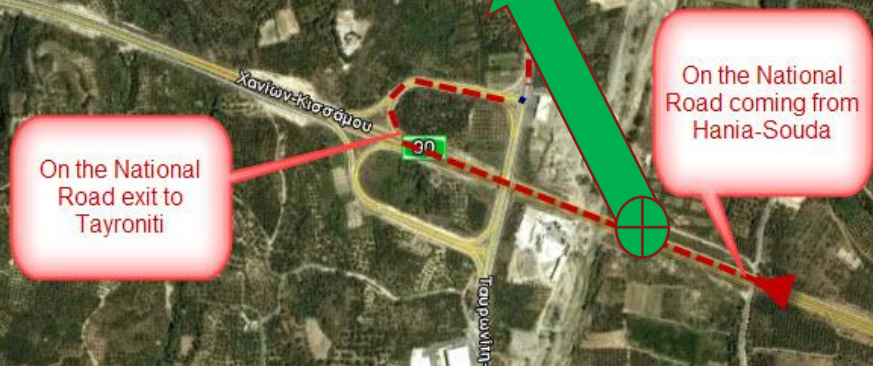
[www.terracrete.gr](http://www.terracrete.gr)  
Tel. +302824083340-41





Press arrow down or left click for every Next page









Left turn after  
Kamisia village

Passing under the  
National Road  
bridge

**Terra Creta's  
facilities**  
Distance from Hania  
is 27 klm



Exit to Tavronitis from here

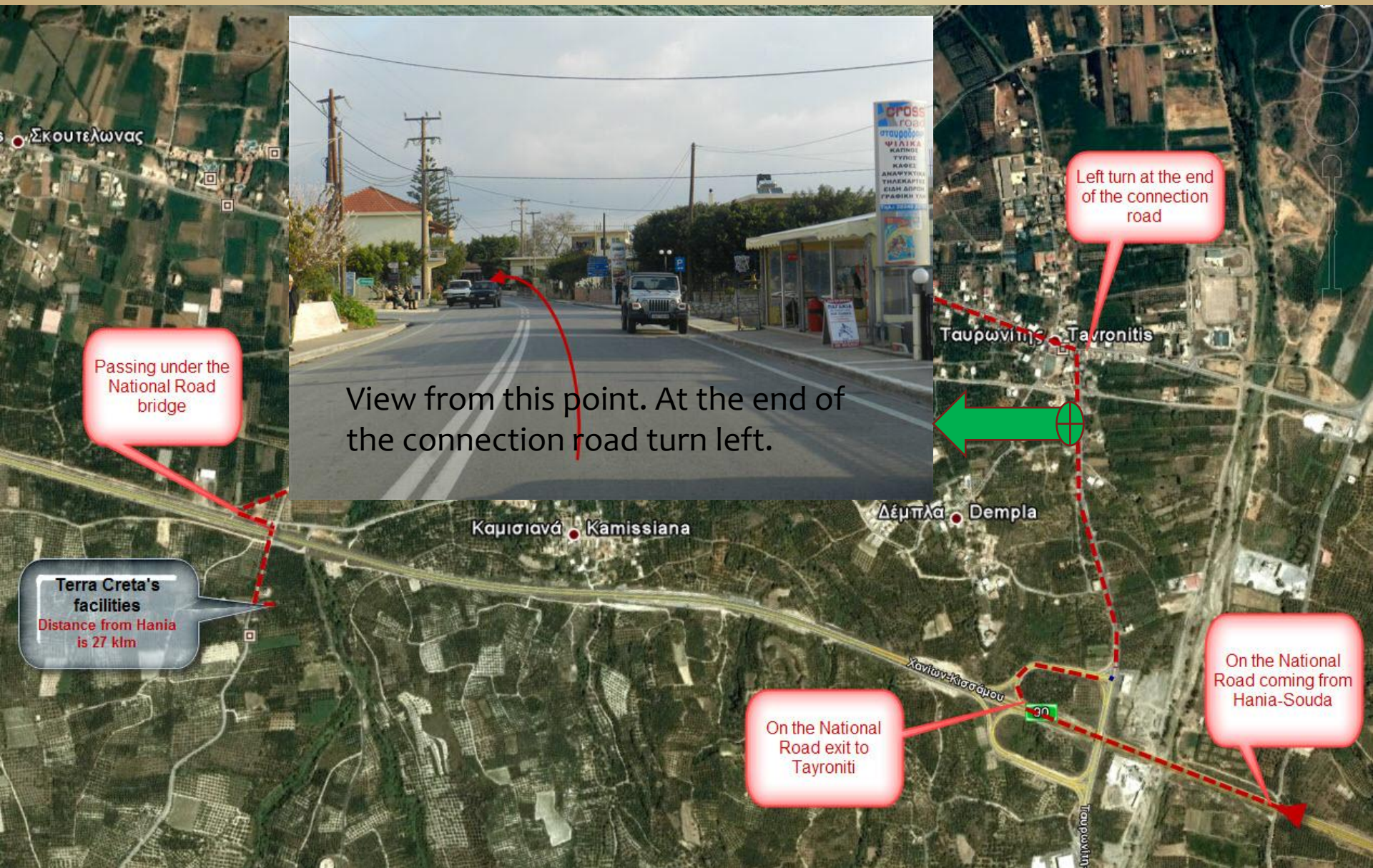
On the National  
Road exit to  
Tayroniti

On the National  
Road coming from  
Hania-Souda









Passing under the  
National Road  
bridge

View from this point. At the end  
of the connection road turn left.

Left turn at the end  
of the connection  
road

Terra Creta's  
facilities  
Distance from Hania  
is 27 klm

On the National  
Road exit to  
Tayroniti

On the National  
Road coming from  
Hania-Souda





Left turn after  
Kamisiana village

Left turn at the end of  
the connection  
road

Ταυρωνίτις - Tayronitis

After Kamisiana village  
turn left here

On the National  
Road coming from  
Hania-Souda

On the National  
Road exit to  
Tayroniti





Passing under the  
National Road  
bridge

Drive under the bridge and turn right

Left turn at the end  
of the connection  
road

**Terra Creta's  
facilities**  
Distance from Hania  
is 27 klm

On the National  
Road exit to  
Tayroniti

On the National  
Road coming from  
Hania-Souda



## Terra Creta SA

You have arrived, turn left to enter in our facilities

Terra Creta's facilities  
Distance from Hania is 27 klm

On the National Road exit to Tayroniti

On the National Road coming from Hania-Souda

